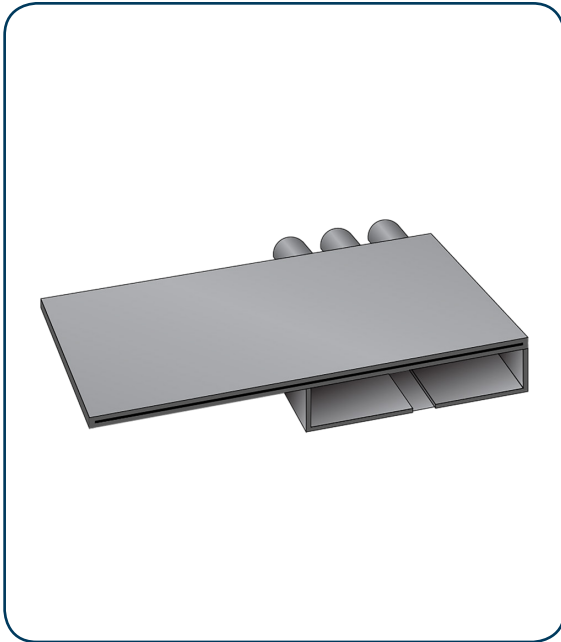




CAST Set-in-Stone® Mounting Module & Conduit (CSIS, CSISC)

CAST Set-in-Stone® Mounting Module & Conduit - Seamless Mounting for the Engineered Wall Light



Description:

The Set-in-Stone® Wall Light Mounting Module can be set under capstones, between blocks, or embedded in solid walls. Each of these applications requires enough space in building materials to accommodate the module. It should be used with the CAST Engineered Wall Light (CEWL5CB, CEWL5LED1), by inserting copper mounting bracket into Set-in-Stone® Module which allows for easy installation and removal, if needed.

Specifications:

- Flexible conduit (CSISC) is sized to accommodate one #18/2 or #16/2 wire. This conduit should be laid along top of wall prior to mortaring.
- Module must also be installed prior to mortaring and should rest flush against underside of capstone.
- Up to three wires can enter the module to enable looping through fixtures. Crimp connections are highly preferred as they are more secure and take up less space than the twist on connectors.

For further details regarding this installation, check out the CAST Set-in-Stone® Wall Light Installation Instructions found on our website.

