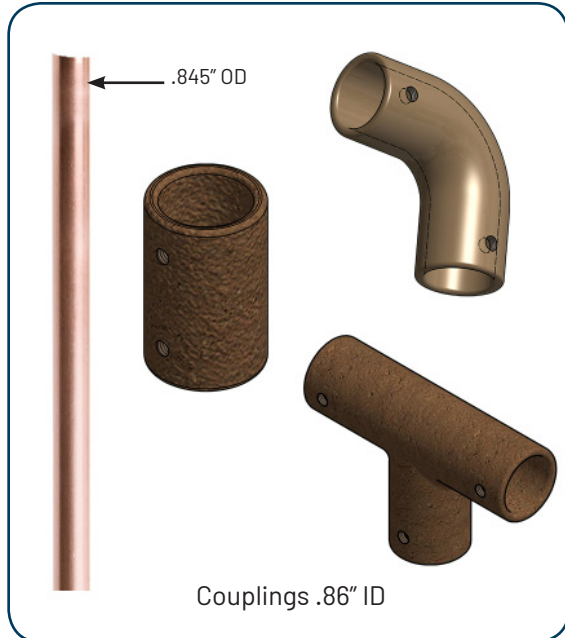




CAST EZ-Riser Coupling Series (CCPC1, CCPL1, CCPT1, & CCPSTEM***)

CAST EZ-Riser Coupling Series - Endless Mounting Options



Description:

The EZ-Riser™ Set-In-Stake® Custom Riser System allows you to create endless mounting options for any of the CAST lighting fixtures.

Can be used with:

CID140 (up lighting), CID248 (up lighting), CIDA140, CIDA248, CIT164 (down lighting), CIT265 (down lighting), CCTL1C, CTLED141, CBL1CB, CBLED141, CBL5CB, CBAL1CB and All Craftsman Spot Lights.

EZ Riser System Components:

- ▶ CCPC1: Coupling
- ▶ CCPL1: Elbow
- ▶ CCPT1: Tee
- ▶ CCPSTEM48: 48" length, cut as you go!
- ▶ CCPSTEM2: 2" length
- ▶ CCPSTEM4: 4" length
- ▶ CCPSTEM6: 6" length
- ▶ CCPSTEM8: 8" length
- ▶ CCPSTEM10: 10" length
- ▶ CCPSTEM12: 12" length
- ▶ CCPSTEM14: 14" length
- ▶ CCPSTEM16: 16" length
- ▶ CCPSTEM18: 18" length
- ▶ CCPSTEM24: 24" length
- ▶ CCPSTEM36: 36" length
- ▶ CCPSTEM42: 42" length



Craftsman Bullet Light with 4" (CCPSTEM4) & (CCPC1) Coupling.



Two Impressionist Tree Lights with the (CCPT1) connection, 2" (CCPSTEM2), and the tree mounting canopy (XCBPTMC1).



Two Craftsman Bullets with 6" (CCPSTEM6), (CCPT1) connection and Talon Stake (CTSL1).

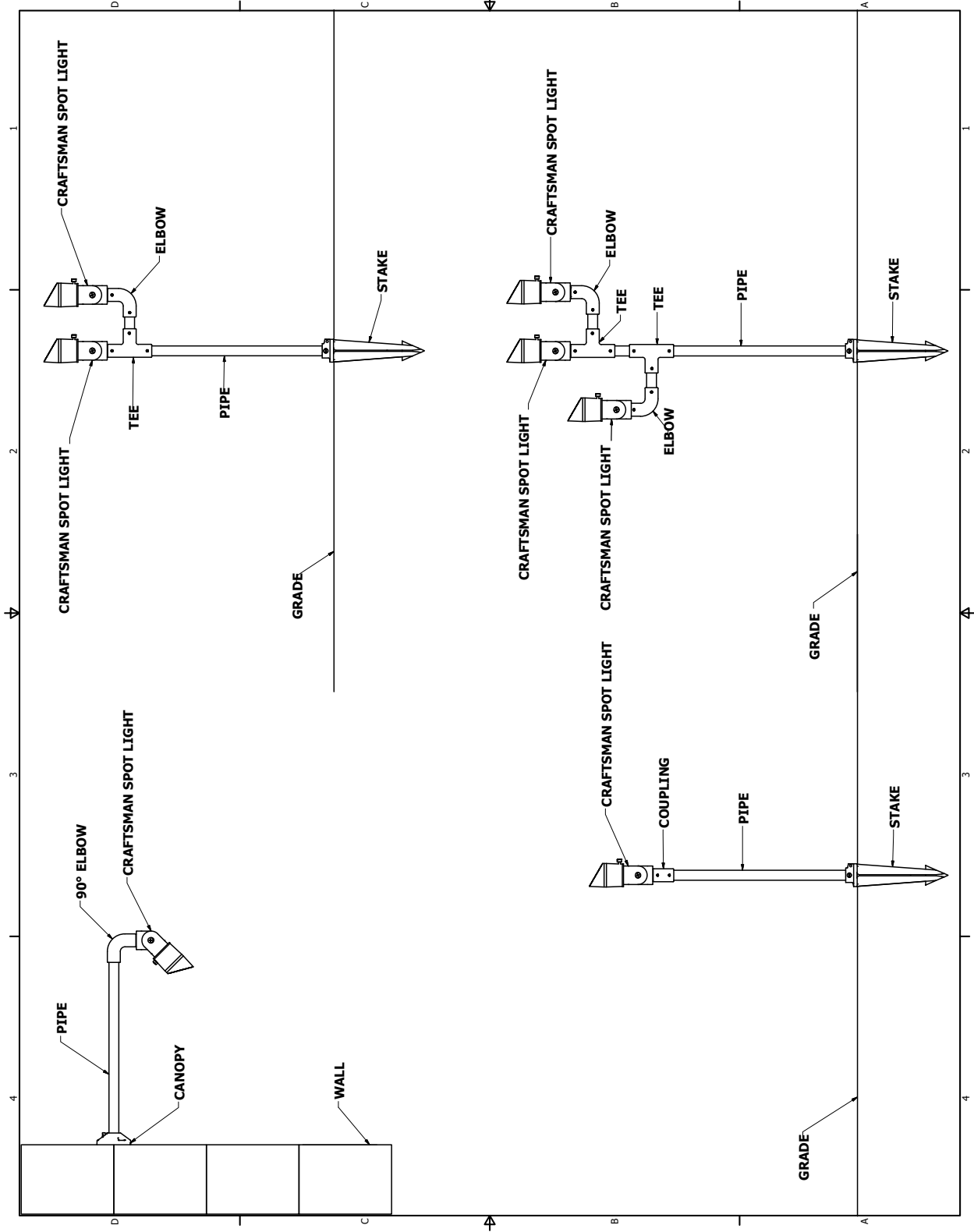


Impressionist Tree Light with the (CCPL1) Elbow connection, 12" (CCPSTEM12), and the mounting canopy (CFM1CBS).

EZ Riser Coupling Use Examples The Possibilities are Endless!

These examples use the Craftsman Directional Light, the following fixtures can be use with the EZ Riser Couplings:

- CID140 (up lighting)
- CID248 (up lighting)
- CIDA140
- CIDA248
- CIT164 (down lighting)
- CIT265 (down lighting)
- CCTL1C
- CTLED141
- CBL1CB
- CBLED141
- CBL5CB
- CBAL1CB
- All Craftsman Spot Lights



EZ Riser™ Set-In-Stake® Custom Riser System

- CCPC1: Coupling
- CCPL1: Elbow
- CCPT1: Tee
- CCPSTEM: Copper stem up to 48"