

TOP VIEW

ISOMETRIC VIEW

120 / 277 VOLT I PHASE 50/60 HZ POWER OR EUROPEAN
 220/240 VOLT I PHASE 50/60 HZ POWER
 USE THHN WIRE. OR USE DIRECT BURIAL
 WIRE INSTALLED WITH VIBRATORY PLOUGH

HOFFMAN OUTDOOR MOUNT ENCLOSURE
 # A24R248HCR

GRADE

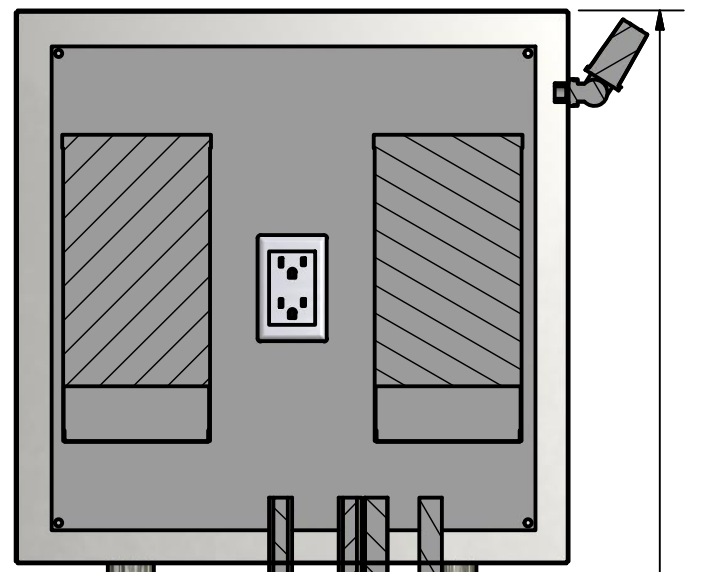
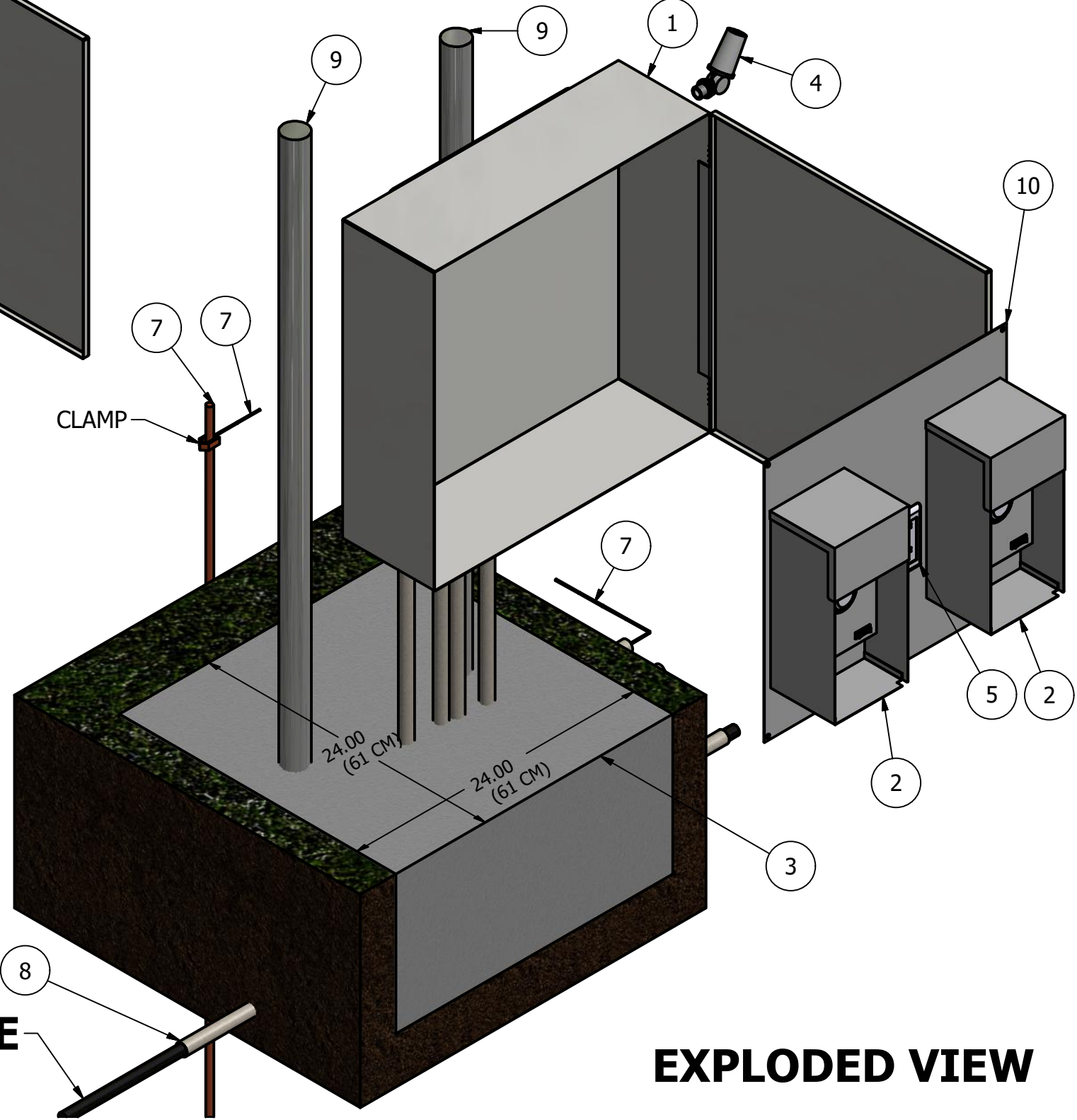
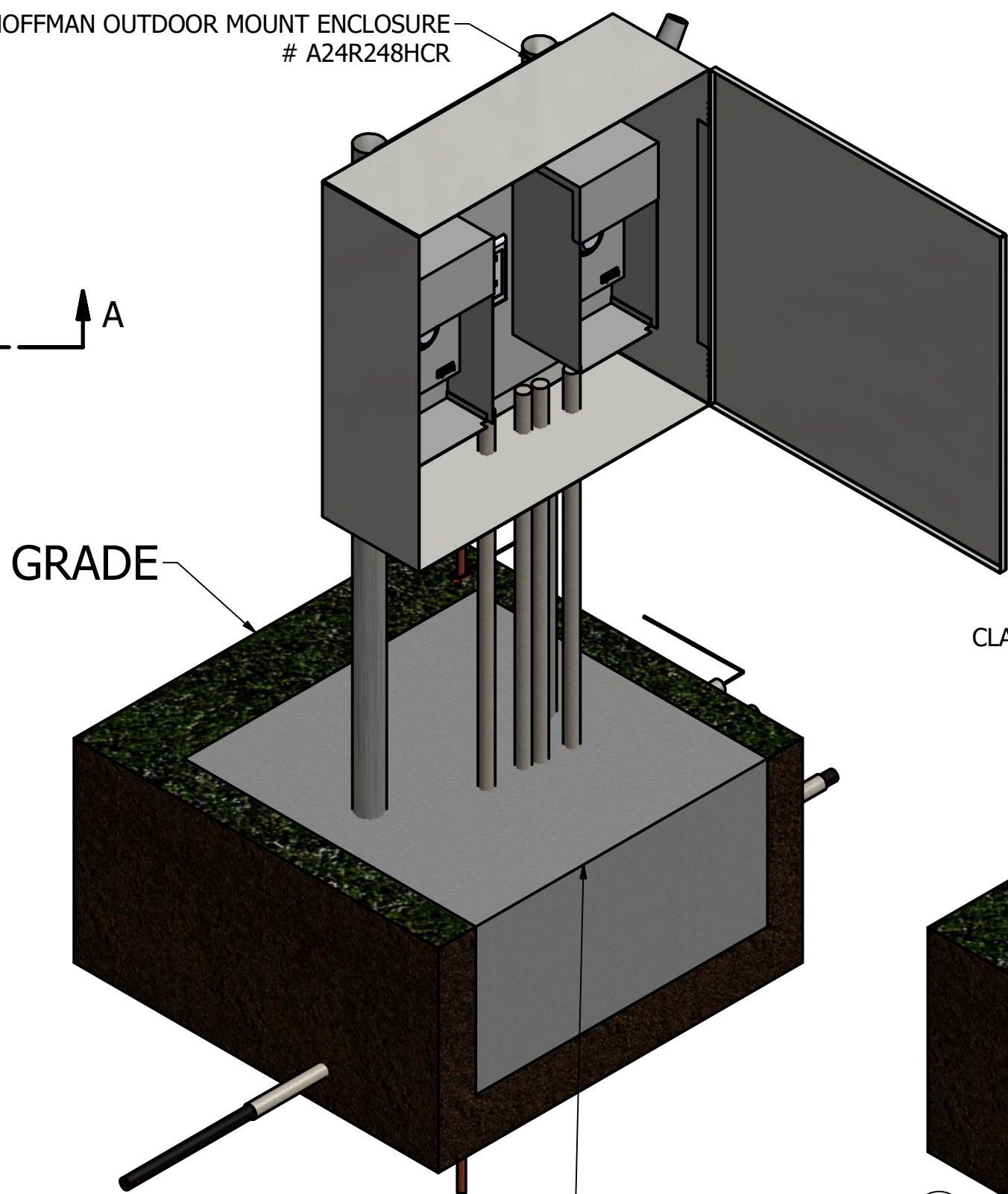
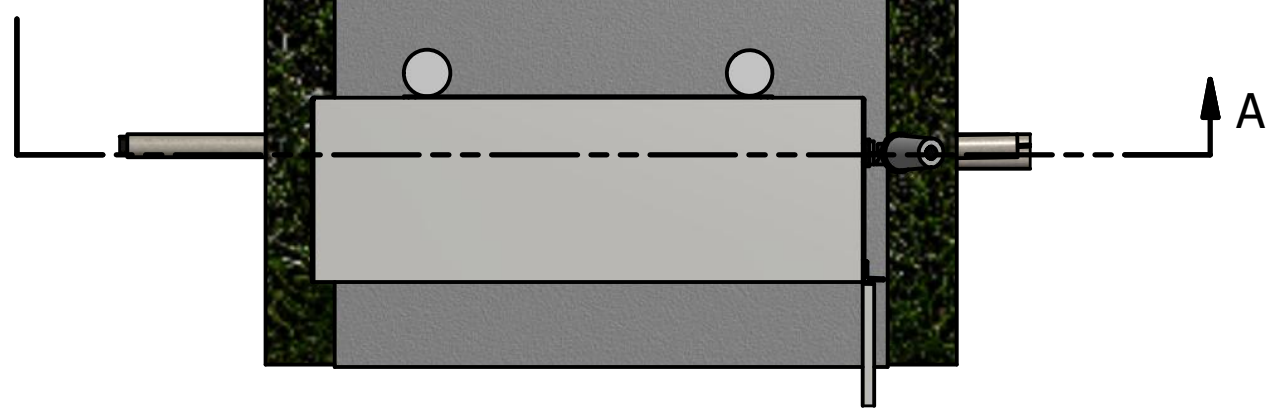
CONCRETE PAD

POWER WIRE

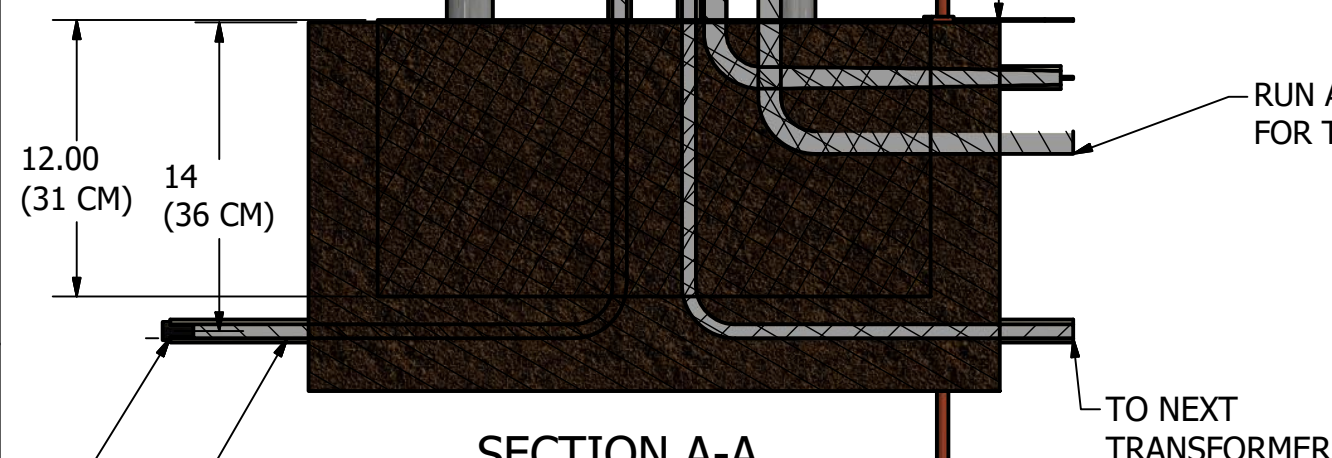
EXPLODED VIEW

D
C
B
A

D
C
B
A



48
(122 CM)



SECTION A-A
 SCALE .12

RUN AN ADDITIONAL 1" [23 MM] CONDUIT
 FOR THE WIRE TO THE PERIMETER LIGHTS

TO NEXT
 TRANSFORMER

NOTE:
 SCALE US INCHES

POWER SUPPLY FROM POWER SOURCE WIRE GAUGE
 TO BE DETERMINED BY ON SITE ELECTRICAL ENGINEER.

PARTS LIST			
ITEM	QTY	PART NUMBER	DESCRIPTION
1	1	A24R248HCR HOFFMAN	24" x 24" x 8" (610MM X 610MM X 203MM) O.D NEMA 3R
2	2	TRANSFORMER	MULTI-TAP TRANSFORMER
3	1	CONCRETE	24" (61 CM) x 24" (61 CM) x 12" (31 CM) FOR SUPPORT
4	1	CTPC	CAST Plug-In Photo Cell OPTIONAL
5	1	GFI receptacle	SIZE TO POWER USED
6	1	GROUND WIRE #8GA	1" FOR GROUND WIRE #8 TO #1
7	1	GROUNDING ROD	5' [152 CM] FOOT GROUNDING ROD
8	1	1" SCH 40 CONDUIT	POWER SUPPLY FEED
9	2	POST	2.5" O.D [8 CM] GALVANIZED STEEL PIPE FENCE POST WITH RAIN CAP
10	1	BACK PANEL MOUNT	BACK PANEL MOUNT 21" X 21" (535MM X 535MM)

CAST PERIMETER
 LED SECURITY LIGHTING SOLUTIONS
 1120-A Goffle Road Hawthorne, NJ 07506 cast-lighting.com 973.423.2303

DRAWN Juan Galicia	2/4/2016	TITLE
CHECKED DB	2/1/2018	REMOTE PERIMETER TWO TRANSFORMER MOUNT WITH ROOM FOR OPTIONAL SURGE PROTECTION
<small>THIS CORRESPONDENCE AND ALL ATTACHMENTS, CONTAINS INFORMATION PROPRIETARY TO CAST LIGHTING, LLC. IT IS SUBMITTED IN CONFIDENCE AND IS TO BE USED SOLELY FOR THE PURPOSE FOR WHICH IT IS FURNISHED AND RETURNED UPON REQUEST. THIS INFORMATION IS NOT TO BE REPRODUCED, TRANSMITTED, DISCLOSED, OR USED OTHERWISE IN WHOLE OR IN PART WITHOUT WRITTEN AUTHORIZATION OF CAST LIGHTING, LLC.</small>		SIZE C SCALE DWG NO HOFFMAN TRANSFORMER REV SHEET 1 OF 1

4 3 2 1