



PERIMETER
 Instructions for Replacement of Drive Circuit / Lightning Arrestor For Cast Perimeter CPL1.
 Part # XCPD1.



Tools you will require: Fine Wire Cutter, Wire stripper for 20 gauge and 18 gauge wire, Wire Splice Crimping Tool



Using Wire Cutter at the base of the potted black driver cut the red, black wires that feed power to the LED's and cut the two white wires that receive power from the Transformer. Strip .30" insulation off each wire. Removal of Bottom Plate optional.

1

PERIMETER
 Instructions for Replacement of Drive Circuit / Lightning Arrestor For Cast Perimeter CPL1.
 Part # XCPD1.



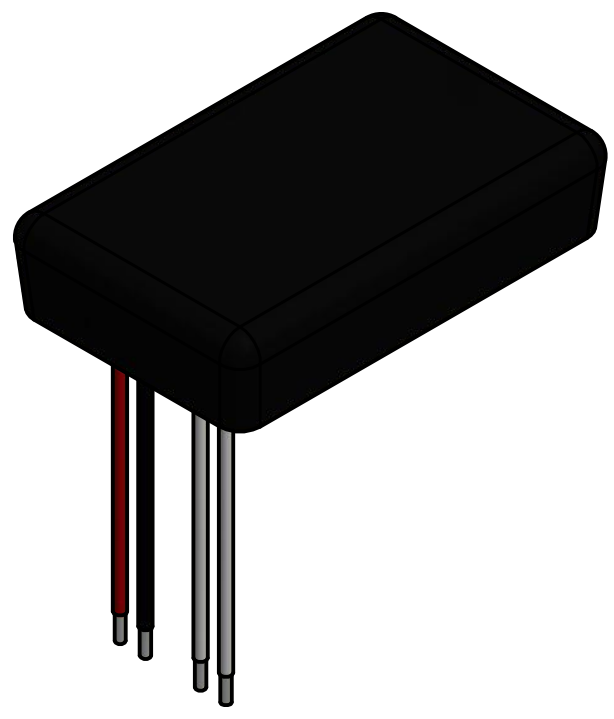
Take new drive circuit Model # XCPD1 and connect Black to Black, Red to Red wires feeding LED. Connect White to White wires connecting power from the Transformer. MAKE SURE TO PROPERLY CRIMP THE EXPOSED .30" WIRE FULLY INSIDE WHITE PARALLEL CRIMP CONNECTION.



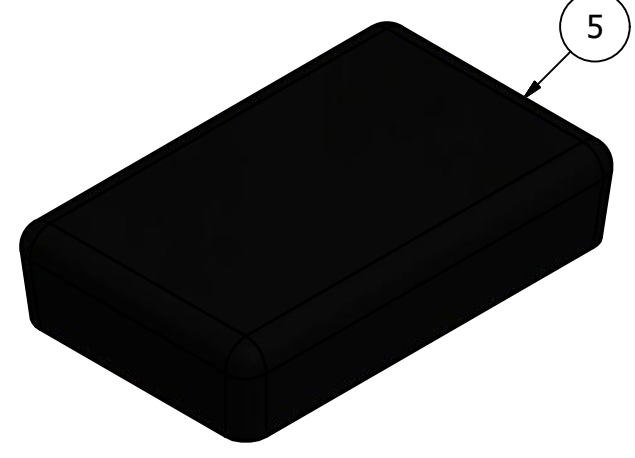
Nest replacement drive circuit inside junction box. Replace cover of junction box. Completed. Power up to check operation. END.

2

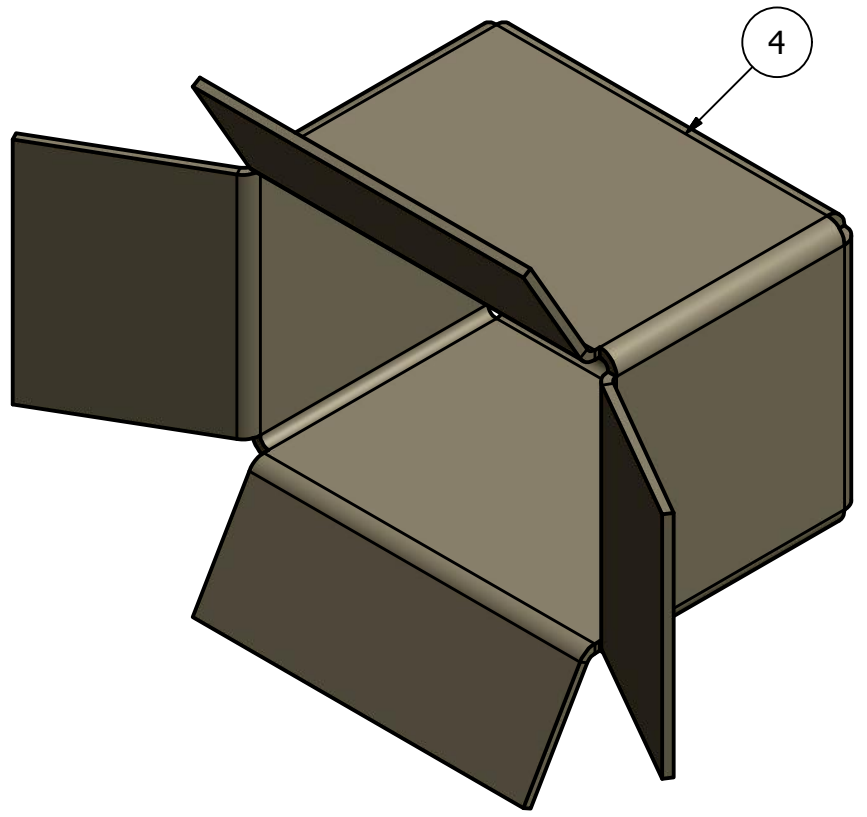
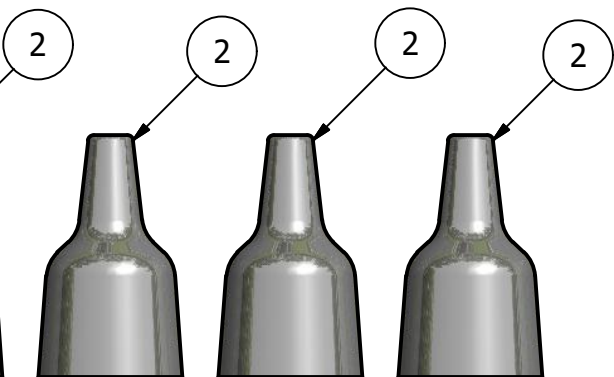
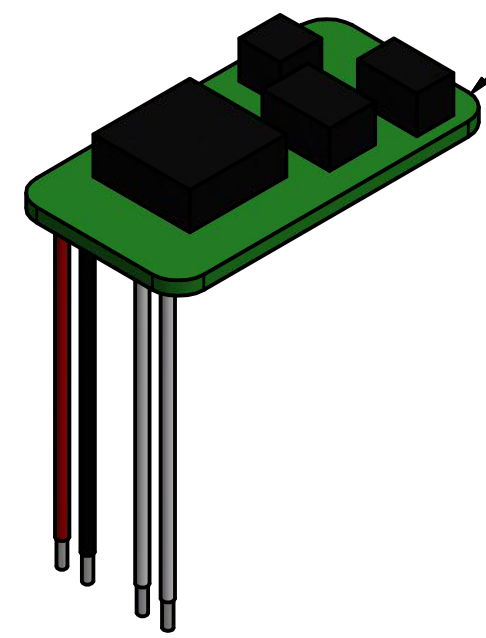
3



5



1



PARTS LIST				
ITEM	QTY	PART NUMBER	DESCRIPTION	
1	1	XCPCLD1	CAST LED DRIVER DOUBLE SIDED, .75 AMP	
2	4	XCEW30146	PARALLEL WIERE CRIMP (IDEAL # 30-146 18-22 AWG)	
3	1	INSTRUCPD1	CPL1 DRIVER REPLACEMENT INSTRUCTIONS	
4	.1	CBOXN	CAST 3/PC INNER BOX FOR DROP-IN MODULES	
5	1	XCPC50	.50 #50-3150 EPOXY POTTING COMPOUND 1/2 CUBIC INCH	

CAST PERIMETER™
 LED SECURITY LIGHTING SOLUTIONS
 1120-A Goffle Road Hawthorne, NJ 07506 cast-lighting.com 973.423.2303

DRAWN Juan Galicia	8/13/2018	TITLE		
CHECKED		REPLACEMENT DRIVE ASSEMBLY		
THIS CORRESPONDENCE AND ALL ATTACHMENTS, CONTAINS INFORMATION PROPRIETARY TO CAST LIGHTING, LLC. IT IS SUBMITTED IN CONFIDENCE AND IS TO BE USED SOLELY FOR THE PURPOSE FOR WHICH IT IS FURNISHED AND RETURNED UPON REQUEST. THIS INFORMATION IS NOT TO BE REPRODUCED, TRANSMITTED, DISCLOSED, OR USED OTHERWISE IN WHOLE OR IN PART WITHOUT WRITTEN AUTHORIZATION OF CAST LIGHTING, LLC.		SIZE C	DWG NO XCPD1	REV
		SCALE	SHEET 1 OF 1	