

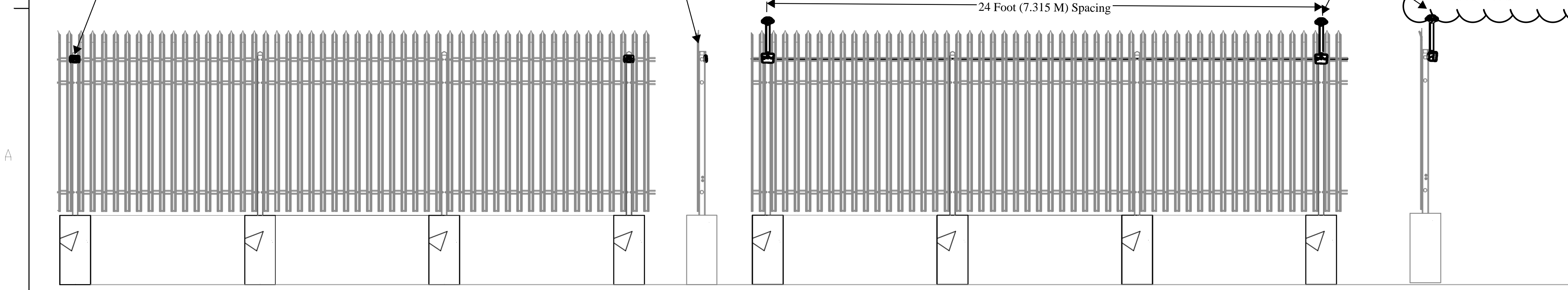
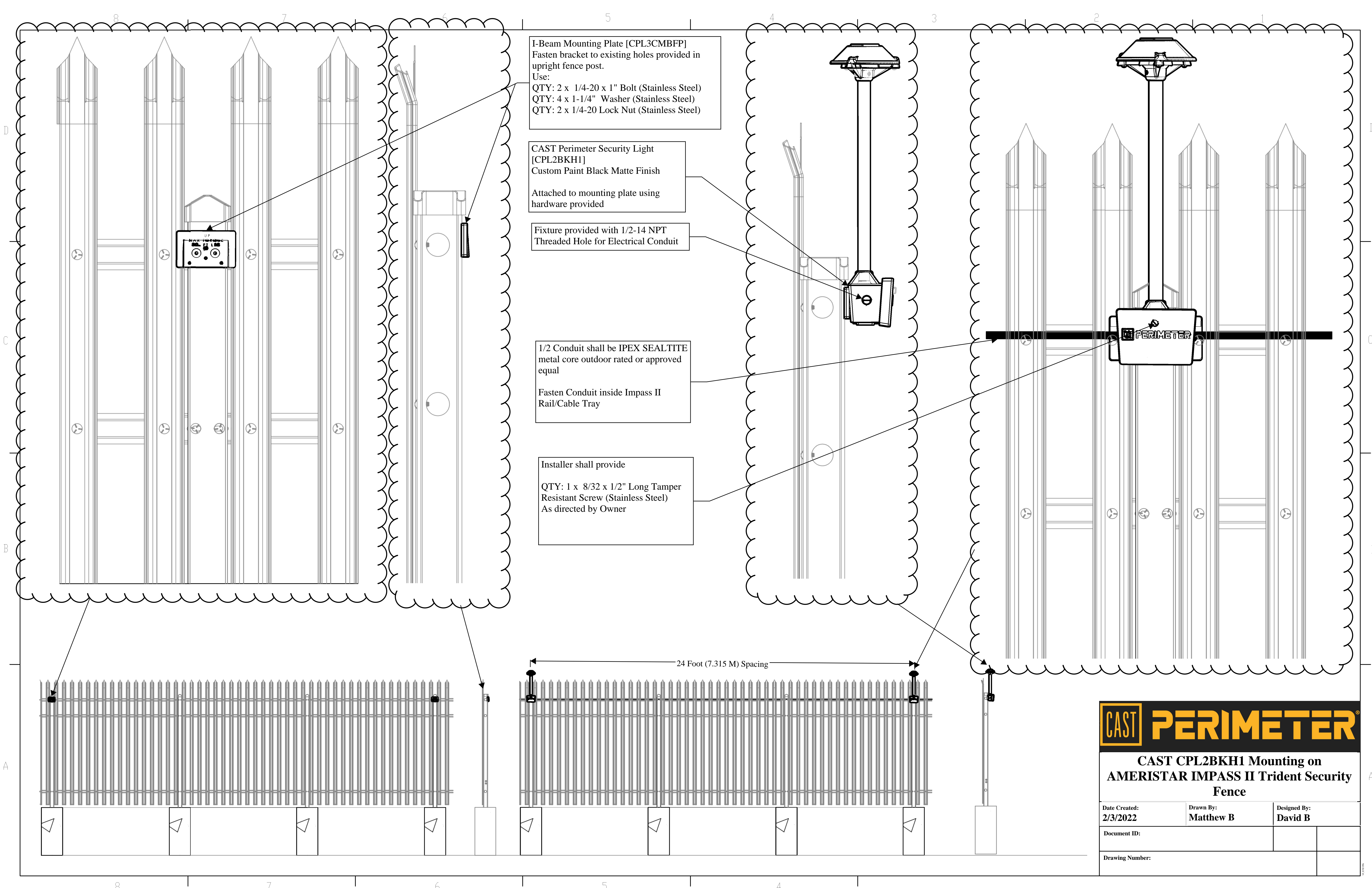
I-Beam Mounting Plate [CPL3CMBFP]
 Fasten bracket to existing holes provided in upright fence post.
 Use:
 QTY: 2 x 1/4-20 x 1" Bolt (Stainless Steel)
 QTY: 4 x 1-1/4" Washer (Stainless Steel)
 QTY: 2 x 1/4-20 Lock Nut (Stainless Steel)

CAST Perimeter Security Light [CPL2BKH1]
 Custom Paint Black Matte Finish
 Attached to mounting plate using hardware provided

Fixture provided with 1/2-14 NPT Threaded Hole for Electrical Conduit

1/2 Conduit shall be IPEX SEALTITE metal core outdoor rated or approved equal
 Fasten Conduit inside Impass II Rail/Cable Tray

Installer shall provide
 QTY: 1 x 8/32 x 1/2" Long Tamper Resistant Screw (Stainless Steel)
 As directed by Owner



CAST CPL2BKH1 Mounting on AMERISTAR IMPASS II Trident Security Fence

Date Created: 2/3/2022	Drawn By: Matthew B	Designed By: David B
Document ID:		
Drawing Number:		